



HAL
open science

A sub-bottom Profiler and Multibeam echo sounder integrated approach as a preventive archaeological diagnosis prior to harbour Extensions

Philippe Pelgas, Yann Le Faou

► **To cite this version:**

Philippe Pelgas, Yann Le Faou. A sub-bottom Profiler and Multibeam echo sounder integrated approach as a preventive archaeological diagnosis prior to harbour Extensions. Sixth International Congress for Underwater Archaeology, Western Australian Museum, Fremantle, Nov 2016, FRE-MANTLE, western Australia, Australia. hal-03694947

HAL Id: hal-03694947

<https://inrap.hal.science/hal-03694947v1>

Submitted on 6 Jul 2022

HAL is a multi-disciplinary open access archive for the deposit and dissemination of scientific research documents, whether they are published or not. The documents may come from teaching and research institutions in France or abroad, or from public or private research centers.

L'archive ouverte pluridisciplinaire **HAL**, est destinée au dépôt et à la diffusion de documents scientifiques de niveau recherche, publiés ou non, émanant des établissements d'enseignement et de recherche français ou étrangers, des laboratoires publics ou privés.



Distributed under a Creative Commons Attribution - NonCommercial - NoDerivatives 4.0 International License

A Sub-Bottom Profiler and Multibeam Echo Sounder Integrated Approach as a Preventive Archaeological Diagnosis Prior to Harbour Extensions

Philippe Pelgas

Institution Inrap, (French National Institute for Preventive Archaeological Research)
philippe.pelgas@inrap.fr

Yann Le Faou

Institution Shom (French naval hydrographic service)
yann.le.faou@shom.fr

Abstract

Before excavations were carried out of the rocks and dredging spoils for extension of the Porto-Vecchio marina in Corsica, France, an investigation was carried out by the Subaquatic Office of the French National Institute for Preventive Archaeological Research. SHOM (Service Hydrographique et Océanographique de la Marine, Ministry of Defence in France), who specialised in Hydrographic and Oceanographic services, recommended that the project team couple the sub-bottom profiler with a multibeam echo sounder.

In preventive archaeology, time pressure is a significant factor in your need to compile a large volume of data. Archives such as archival maps, old spatial data and data from more recent surveys including meta-data from a sub-bottom profiler and multibeam echo sounder, can be superimposed on the dataset of current marine maps after which all statistics can be integrated in a Geographical Information System (GIS).

All of the processed data were exported in QGIS™. The GIS allowed us to subdivide or categorise the abnormalities according to different parameters. GIS is a meta-data compilation tool—a guide for archaeologists to strategically choose what to excavate.

Keywords

Sub-bottom profiler, multibeam echo sounder, GIS, harbour

Introduction

This investigation was carried out in France, more specifically at Corsica in the Mediterranean, between September 2015 and June 2016, at one end of the bay of Porto-Vecchio including a part of the maritime public domain (Figure 1). The Subaquatic Bureau of the French National Institute for Preventive Archaeological Research carried out the investigation, at the request of the Department of Submarine and Subaquatic Research of the Ministry of Culture. It was carried out before excavation of the rock and dredging spoils in order to extend the marina in Porto-Vecchio. According to Pelgas (2015b: 338), a similar survey was conducted in 2013 in the commercial port at Porto-Vecchio with superposition of different data.

Methodology

With preventive archaeology, limited time is a key factor in the compilation of large volumes of data, so how can this be best organised? Most of the old spatial data could be superimposed onto the dataset of the current marine map and survey, superimposed onto the architect's project plan, and then all could be integrated in a Geographical Information System (GIS,

cf. Figure 2). In general, for old maps, transferring them into a GIS is not easy, potentially resulting in significant distortions in measurements due to incompatibilities. In this example of an eighteenth-century map, we already see the Porto-Vecchio harbour; however, the data is more qualitative than quantitative.

The old postcards also provide useful information, showing: a two-masted schooner and an anchored four-masted boat in this part of the bay in shallow waters, dated to the beginning of the last century, probably in the 1920s. This data could be associated only with a reference to the area (raster grid with web link) with the zoom in scale minimal and maximal visibility. Historical data studies including maps can provide information about marine deposits or erosion. Data was compiled and superimposed onto the current marine maps.

Different plotting was incorporated in the GIS using lead lines (fat covered) between 1884 and 1891 by SHOM, in the harbour and the gulf (Figure 3). It provides us with data relating to the seabed's evolution. These bathymetric figures have respectively provided 1291 and 1017 measurements. With the time constraints faced, measurements were of utmost importance using monobeam in 1979 and 1987, with the vertical sounder

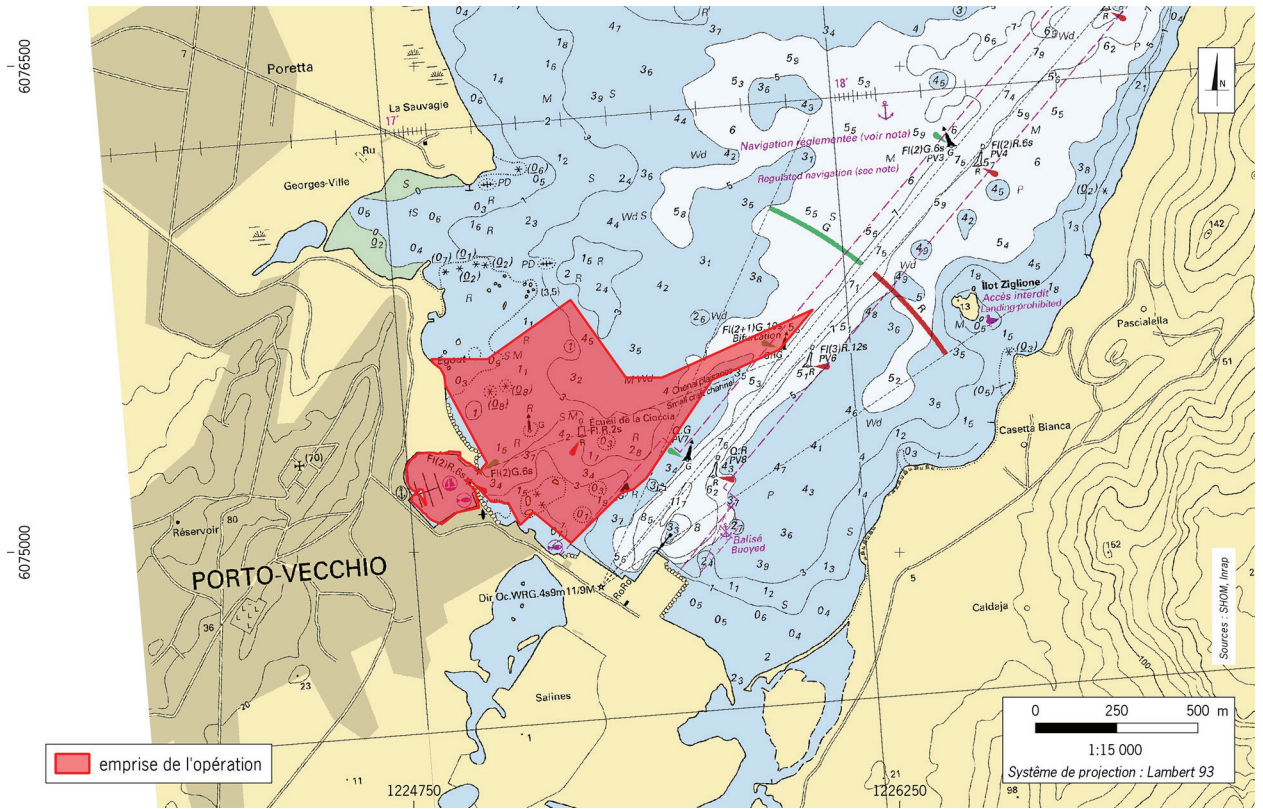


Figure 1. Area under investigation.



Figure 2. Results of the investigation superimposed onto the harbour development plan.

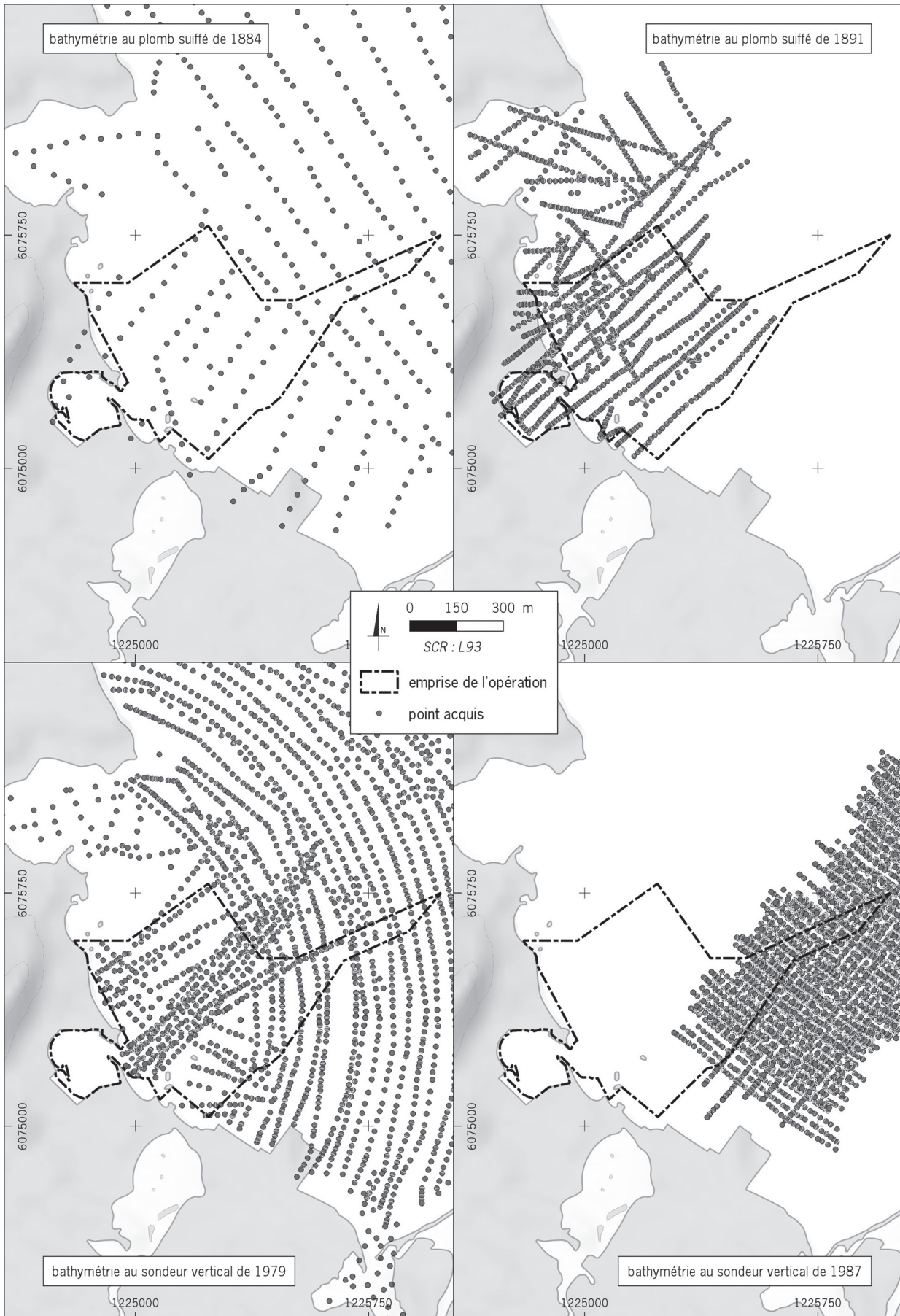


Figure 3. Lead lines (fat covered) between 1884 and 1891, SHOM data.

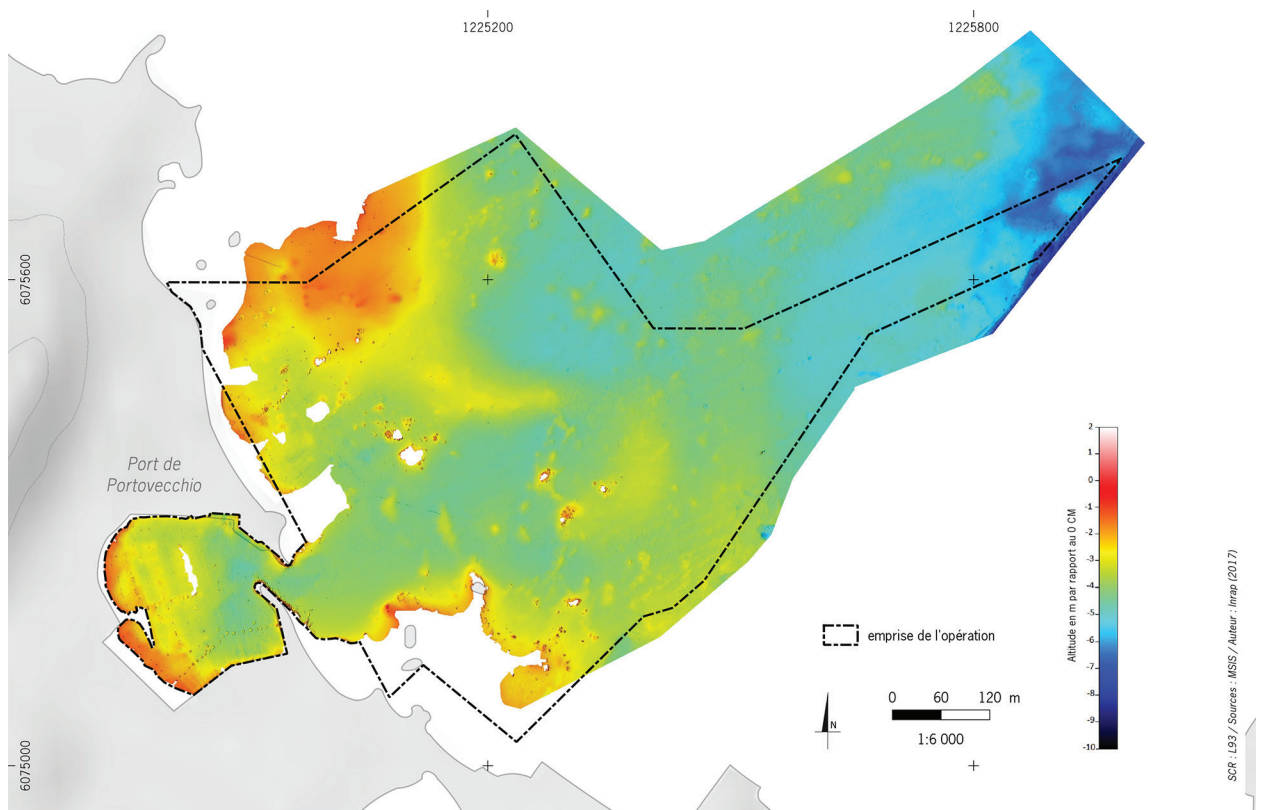


Figure 4. 2015 Mesuris bathymetric map.

DESO20, with 6060 and 9676 measurements within the same area.

One step that produced a significant volume of data was the sub-bottom profiler survey, which has been requested by DRASSM of the Ministry of Culture. However, before this step, according to Pelgas *et al.* (2015a: 89), in order to carry out an effective sub-bottom echo-sounder survey, it is very important to construct a very good quality bathymetric Digital Elevation Model of the area. It is an important preliminary step (Figure 4). Caiti (2009: 149) has already indicated that multibeam allows us to carry out a very accurate plan of an archaeological area.

The metadata files include:

- Position of the different seismic emissions;
- Speed of the vessel;
- The name of each acoustic profiling; and,
- The number of ping emissions.

SHOM, who specialises in Hydrographic and Oceanographic services, recommended coupling the sub-bottom profiler with a multibeam echo sounder. We have used the seabat® 7125 with Teledyne Reson (511 beams on an angle of 160° with a cadence of 40 measurements per second). Data acquisition allows us

in this case to obtain up to 25 probe spots per square metre. A reference station was established on land with global system for Mobile Communication 'GSM' liaison with the Global Positioning System 'GPS' on the boat. INRAP collaborated with Mesuris Company to implement an underwater survey using the multibeam echo sounder and the sub-bottom profiler.

The use of the multibeam echo sounder has the advantage of reliable positioning; and, is vertically accurate to +/- 10cm, and horizontally accurate to +/- 2cm. Another advantage is that should the abnormality be covered with sediment after the survey, the reliability of the positioning will increase the likelihood of relocating the anomaly. In the boat, the team has a real-time follow-up of the survey on the screens; and, under the hull, there were tools (multibeam and sub-bottom connected to the inertial central). It is also important to measure the velocity of the acoustic wave in the water, according to the temperature and the salinity.

The seabed detection is carried out by analysis of the beams dispersed in all directions. The reception aerial is made up of transducers that digitise the echoes reflected from the seabed and its features (seabed profile, rocks, etc.). We obtain a matrix containing the depth measurements of the seabed on the acoustic signal received. It is the reflectivity of the samplings, which

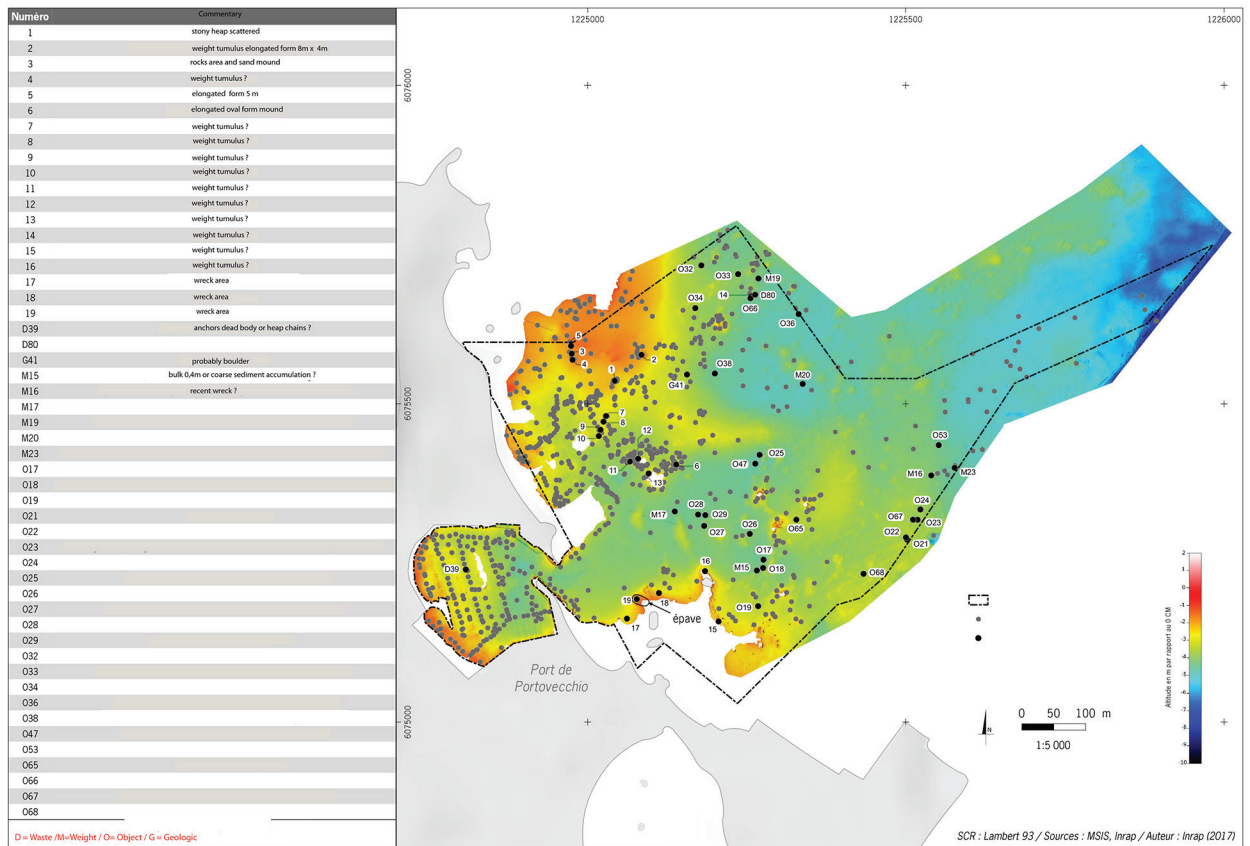


Figure 6. Selected abnormalities.

15kHz for a vertical resolution of less than 10cm and a maximum directivity of 20 degrees. It is readable with other seismic scoring software (Kogeo, an open source software), or in Kingdom seismic and geological interpretation of HIS Kingdom® (purchased software).

The importation of the navigation data in Shape file corresponding to each profile is carried out.

A selected profile can be read, and we can see where the other perpendicular profiles are; and, we can determine the burial depth of abnormalities. All the processed data (Shape file) can then be exported in QGIS™ (an open source GIS software). We have for each data, the .dbf, .prj, .sbn, .sbx, shpp, and .shx files.

Analysis

The GIS allows us to subdivide or categorise the abnormalities according to different parameters. The depth of burial and depth to the water surface will be recorded for each abnormality. The advantage of carrying out the preliminary DTM is to compare some abnormalities and their positioning (Figure 6). The GIS allows us to see structures as a pipe sometimes on the bathymetry, and on the sub-bottom profiles the continuity of the burial pipe.

Abnormalities were selected and sorted in order to be verified soundings (concrete mooring) with water dredge. We have seen vertical positioning ‘ultra-accuracy’ with a vertical resolution of 7cm and horizontal resolution between 15 and 25cm with 3 knots.

Results

One of the abnormalities was a stone 5cm above the bedrock —a wreck was discovered in an area covered by multibeam: some frames, wooden hull lining girders and metal remains, which possibly covered the hull (unknown today) as well as nineteenth-century artefacts (roof tiles with printed dates). The multibeam picture indicated rock or anthropic abnormality. All the others have given geological results or layers of hardened shells. All information could be exported in the GIS.

Conclusion

GIS is a meta-data compilation tool, but it requires a significant amount of time (several months, in this case, to analyse all files, compile and select). It is a guide for archaeologists in the strategic selection of where to conduct excavation.

Acknowledgements

Simon Ichstchenko, Mesuris.
Philippe Raja, INRAP.
Emmanuelle Miejac, INRAP.

References

Pelgas, P.H., S. Ichstchenko, Y. Le Faou, Y. Moysan and B. Wirtz 2015a. L'application de la géophysique marine au diagnostic subaquatique. Techniques d'observation des fonds, de pénétration des sédiments et de mesure des anomalies magnétiques. *Archéopages* 41: 82–91.

Pelgas, P.H. and B. Wirtz 2015b. French experience using sub-bottom profiler combined with sonar multi-beam as a preventive archaeological diagnostic before dredging. *Archaeologia Polona* 53: 336–340.

Caiti, A. 2009. Metodi di esplorazione acustica per l'archeologia subacquea: ecoscandaglio multifascio, sonar a scansione laterale, profilaori sismici, in X. Nieto, M.A. Cau (eds) *Arqueologia Nautica Mediterrania* (Monografies del CASC 8): 143–162. Girona.

de Juan Fuertes, C. 2009. La prospección arqueológica subacuática. Principios y métodos, in X. Nieto, M.A. Cau (eds) *Arqueologia Nautica Mediterania* (Monografies del CASC 8): 121–132. Girona.